

ADA MOTOR

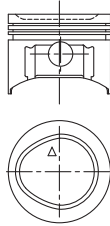
mm

**HYUNDAI**

**Motor G15B**  
1500 ccm, 56 kW (76 PS)  
**Vehicle** Excel, 1990-1994

Cyl.	29.40	18	1.5 Cr
4	-3.70	60	1.5
	58.80		4 Cr
75.50			

**Std. 0.50**  
**10 4022**  
**12 4019**



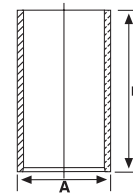
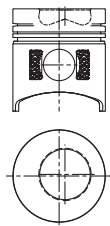
**Motor D4AE, 4D31-T**  
3928 ccm  
**Vehicle** H 350 TD, HD 77 TD

Cyl.	60.65	34	3 Cr
4	-17.45	83.5	2 Cr
	110.65		4 Cr
100.00			

A = 104.063  
L = 192

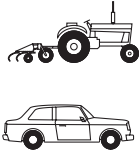
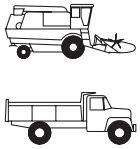
**Std. 0.50 1.00**  
**10 4024**  
**12 4021**  
**14 4006**

CRP



Combustion Bowl 54.60

H



ADA MOTOR

mm



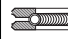
**HYUNDAI**

type.

Cyl.  
4

60.00  
-16.50  
110.00

34  
84

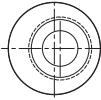
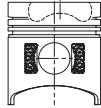
 3 Cr  
 2 Cr  
 4 Cr

Std.

10 4027

12 4025

CRP



Combustion Bowl 54.80

H